

# The Scanwill MP Hydraulic Pressure Intensifiers in Mobile Applications

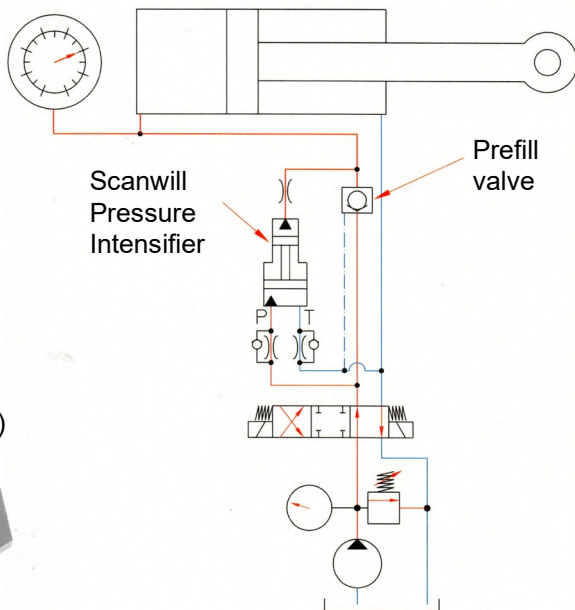


The Scanwill MP- intensifiers are used to increase the pressure in the crane cylinders, when they move out, and to ensure sufficient pressure in the stabilizers. The end pressures in this application are between 250 and 350 bar.

More Pressure. More Power



250 - 350 bar



The MP-M intensifier (in-line)

The MP-L intensifier (in-line)



More information on [www.scanwill.com](http://www.scanwill.com)

The Scanwill Pressure Intensifiers allow to keep the energy consumption low, contributing to reach goal no. 12 in the world sustainability target.

12 RESPONSIBLE CONSUMPTION AND PRODUCTION

