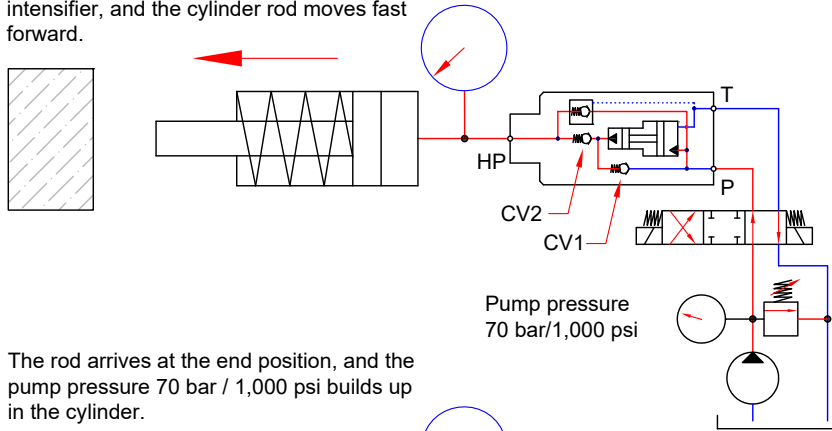




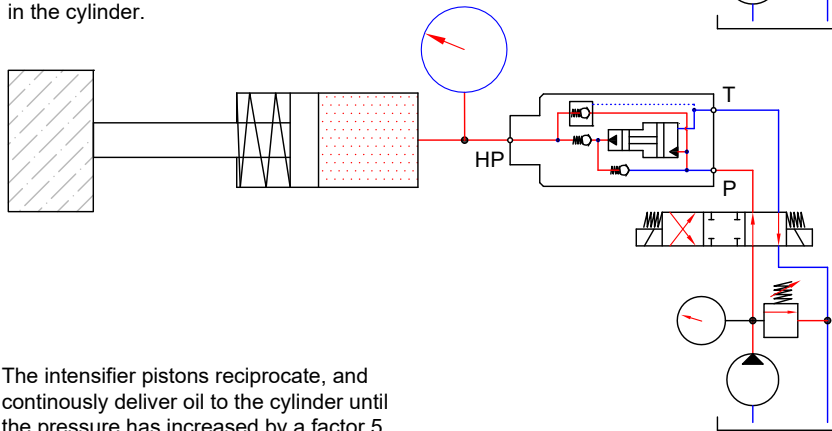
ScanWill®  
More Pressure. More Power

## Increasing the pressure in a single acting cylinder

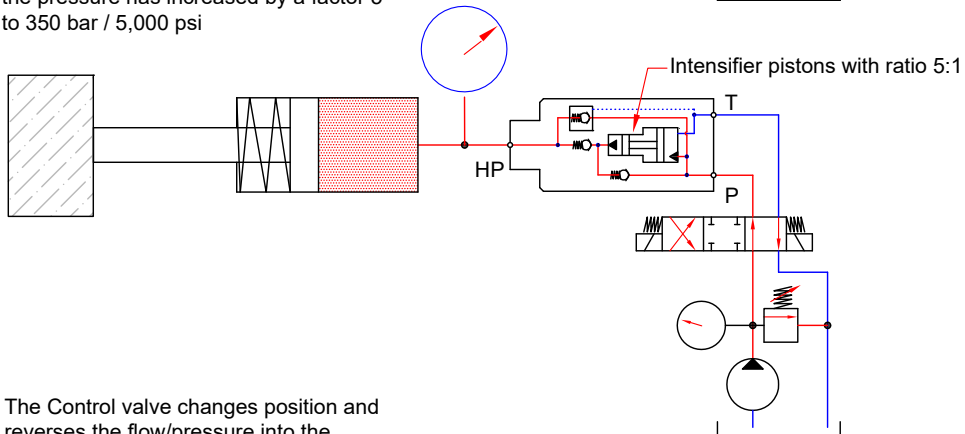
The pump flow goes through the check valves CV1 and CV2 integrated in the intensifier, and the cylinder rod moves fast forward.



The rod arrives at the end position, and the pump pressure 70 bar / 1,000 psi builds up in the cylinder.



The intensifier pistons reciprocate, and continuously deliver oil to the cylinder until the pressure has increased by a factor 5 to 350 bar / 5,000 psi



The Control valve changes position and reverses the flow/pressure into the intensifier ports P and T. This opens the POV, providing a direct path back to tank, and the cylinder rod retracts.

