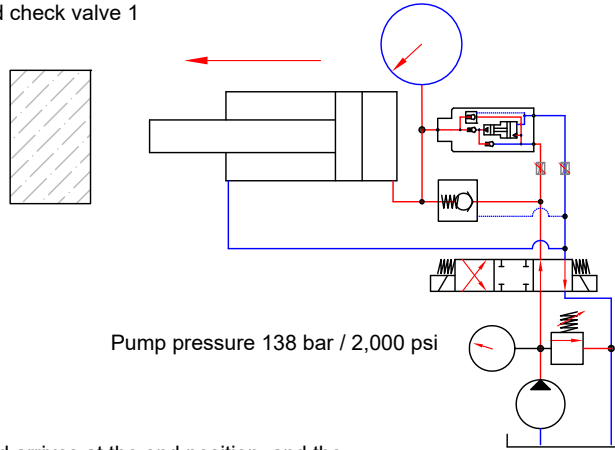


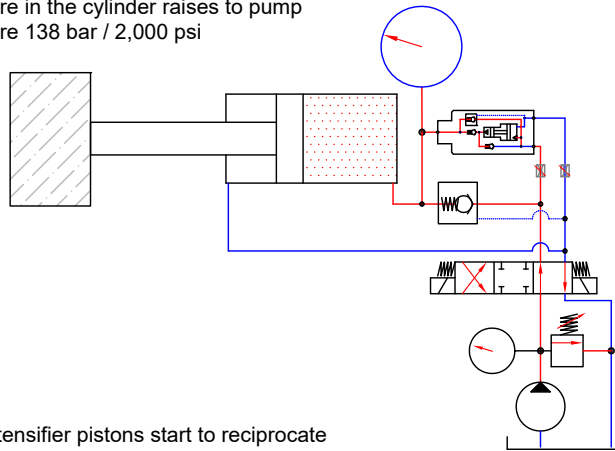


Increasing the pressure in a double acting cylinder - with bypass

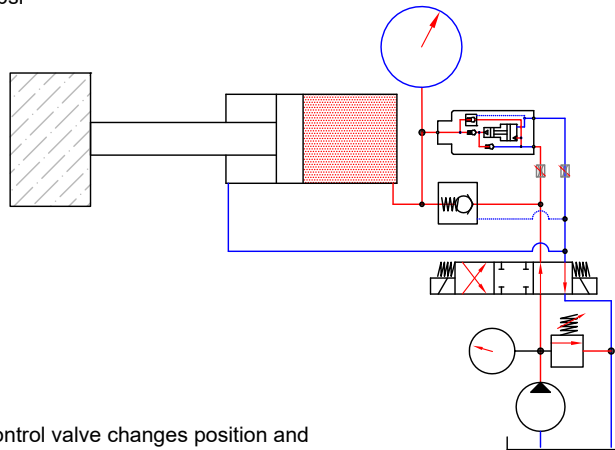
The pump flow goes through the external pilot operated check valve 1



The rod arrives at the end position, and the pressure in the cylinder raises to pump pressure 138 bar / 2,000 psi



The intensifier pistons start to reciprocate increasing the pressure by a factor 3, and the pressure in the cylinder to 414 bar / 6,000 psi



The control valve changes position and the external pilot operated check valve opens, and the cylinder returns.

