

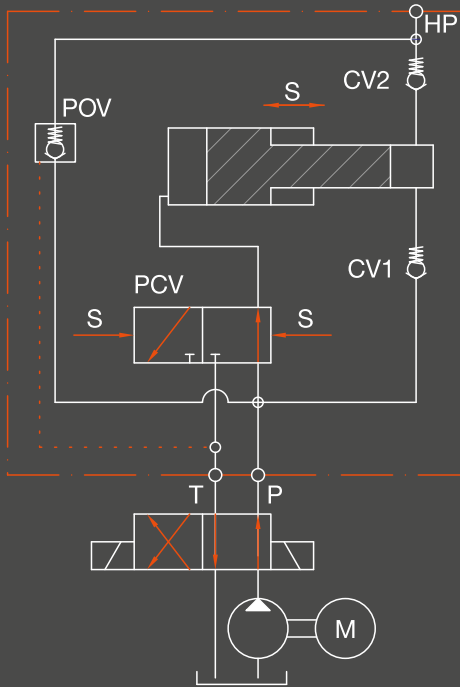


More Pressure



ScanWill®

More Power



Technology

ScanWill intensifiers are based on a piston principle where a larger diameter piston pushes a smaller diameter piston thus increasing the pressure to a factor equal to the ratio: Larger diameter area divided by smaller diameter area.

The outlet pressure will always be proportionate to the supplied pressure.

The diagram shows the basic principle of the ScanWill intensifiers consisting of a piston arrangement, a Piston Control Valve PCV, Check Valves CV1 & CV2 and the Pilot Operated check Valve POV.



ScanWill - More Pressure. More Power

ScanWill compact hydraulic pressure intensifiers offer an easy, energy-saving, safe and cost-efficient solution to achieving a higher output pressure from an existing low-pressure power source.

Low pressure supplied to the inlet port – say 15 - 200 bar / 218 - 2,900 psi – is transformed to a higher pressure at the outlet port – from 20 - 4,000 bar / 290 - 58,000 psi.

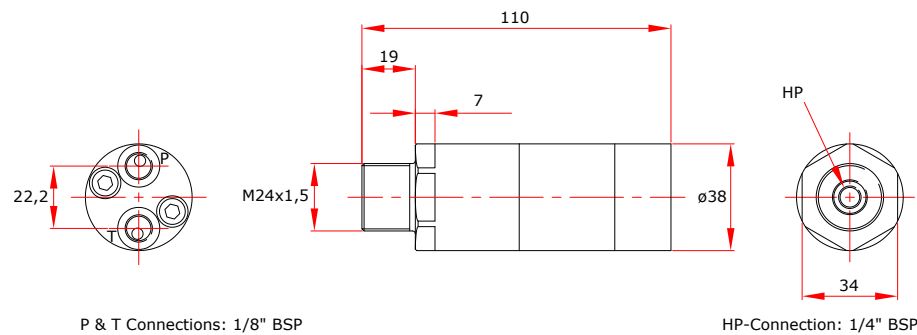
ScanWill intensifiers are offered in cast iron and steel with a chrome finish as well as in stainless steel for the oil & gas sector.



Multiplier Small is a compact all-round in-line hydraulic pressure intensifier for use in limited space.

Features:

- In-line pressure intensifier
- End pressure range: 20 - 800 bar / 290 - 11,600 psi
- Multiple intensification ratios available
- Reciprocating - continuously delivers flow during pressure build-up
- All high-pressure valves are integrated



Technical Specifications

Ratio	Max. Inlet Flow	Max. Supply Pressure	Max. Output Pressure
(i)	(LPM / GPM)	(bar / psi)	(bar / psi)
2.0	8.0 / 2.1	200 / 2,900	400 / 5,800
2.4	8.0 / 2.1	200 / 2,900	480 / 6,960
2.8	8.0 / 2.1	200 / 2,900	560 / 8,120
3.4	8.0 / 2.1	200 / 2,900	680 / 9,860
4.0	8.0 / 2.1	200 / 2,900	800 / 11,600
5.0	8.0 / 2.1	160 / 2,320	800 / 11,600
7.0	8.0 / 2.1	114 / 1,653	800 / 11,600
9.0	8.0 / 2.1	89 / 1,290	800 / 11,600

MP-T | LOW/MEDIUM PRESSURE

MultiPlier Tube is an all-round in-line hydraulic pressure intensifier for tube connections.

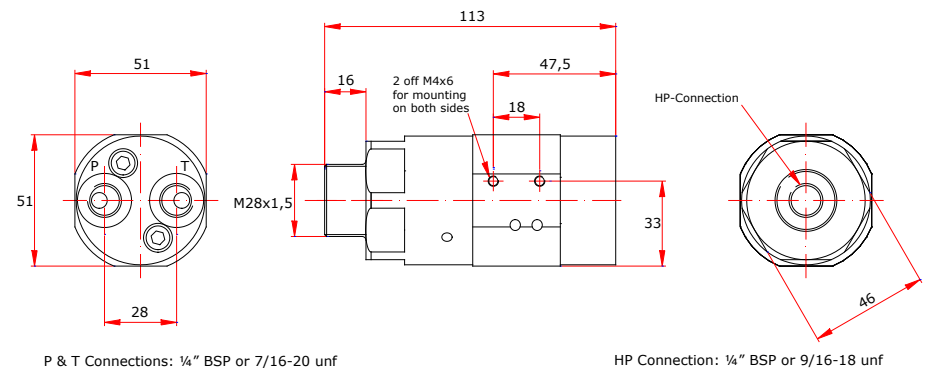
Features:

- In-line pressure intensifier
- End pressure range: 20 - 800 bar / 290 - 11,600 psi
- Multiple intensification ratios available
- Reciprocating - continuously delivers flow during pressure build-up
- All high-pressure valves are integrated



Technical Specifications

Ratio	Max. Inlet Flow	Max. Supply Pressure	Max. Output Pressure
(i)	(LPM / GPM)	(bar / psi)	(bar / psi)
1.5	15.0 / 4.0	200 / 2,900	300 / 4,350
2.0	15.0 / 4.0	200 / 2,900	400 / 5,800
2.8	8.0 / 2.1	200 / 2,900	560 / 8,120
3.4	15.0 / 4.0	200 / 2,900	680 / 9,860
4.0	14.0 / 3.7	200 / 2,900	800 / 11,600
5.0	14.0 / 3.7	160 / 2,320	800 / 11,600
7.0	13.0 / 3.4	114 / 1,653	800 / 11,600
9.0	13.0 / 3.4	89 / 1,290	800 / 11,600

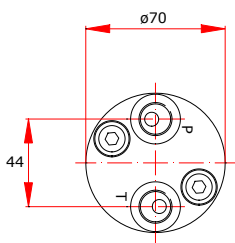




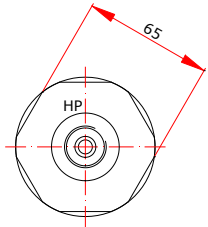
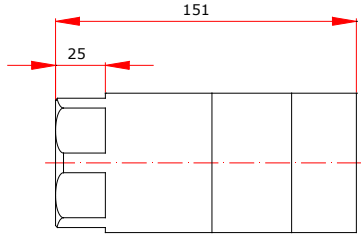
MultiPlier Medium is an in-line hydraulic pressure intensifier for medium size hydraulic systems.

Features:

- In-line pressure intensifier
- End pressure range: 20 - 800 bar / 290 - 11,600 psi
- Multiple intensification ratios available
- Reciprocating - continuously delivers flow during pressure build-up
- All high-pressure valves are integrated – including a P.O. check Valve POV



P & T Connections: 3/8" BSP



HP Connection: 1/2" BSP

Technical Specifications

Ratio	Max. Inlet Flow	Max. Supply Pressure	Max. Output Pressure
(i)	(LPM / GPM)	(bar / psi)	(bar / psi)
1.8	25.0 / 6.6	200 / 2,900	360 / 5,220
2.1	25.0 / 6.6	200 / 2,900	420 / 6,090
2.6	35.0 / 9.3	200 / 2,900	520 / 7,540
3.4	35.0 / 9.3	200 / 2,900	680 / 9,860
4.0	35.0 / 9.3	200 / 2,900	800 / 11,600
5.0	35.0 / 9.3	160 / 2,320	800 / 11,600
7.0	35.0 / 9.3	114 / 1,653	800 / 11,600

MP-L | LOW/MEDIUM PRESSURE

MultiPlier Large is an in-line hydraulic pressure intensifier for large-sized hydraulic systems.

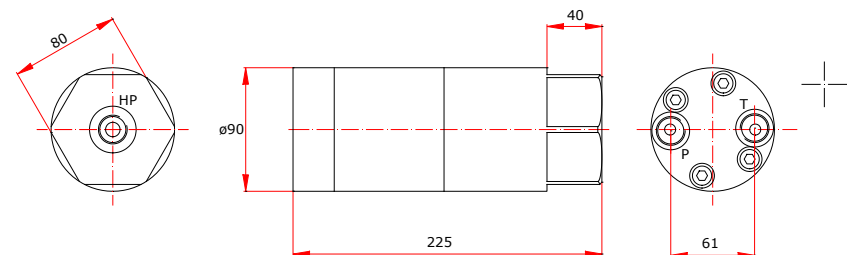
Features:

- In-line pressure intensifier
- End pressure range: 20 - 800 bar / 290 - 11,600 psi
- Multiple intensification ratios available
- Reciprocating - continuously delivers flow during pressure build-up
- All high-pressure valves are integrated – including a P.O. check Valve POV



Technical Specifications

Ratio	Max. Inlet flow	Max. Supply Pressure	Max. Output Pressure
(i)	(LPM / GPM)	(bar / psi)	(bar / psi)
1.5	80.0 / 21.2	200 / 2,900	300 / 4,350
2.0	80.0 / 21.2	200 / 2,900	400 / 5,800
3.4	80.0 / 21.2	200 / 2,900	680 / 9,860
4.0	80.0 / 21.2	200 / 2,900	800 / 11,600
5.0	80.0 / 21.2	160 / 2,320	800 / 11,600
7.0	80.0 / 21.2	114 / 1,653	800 / 11,600



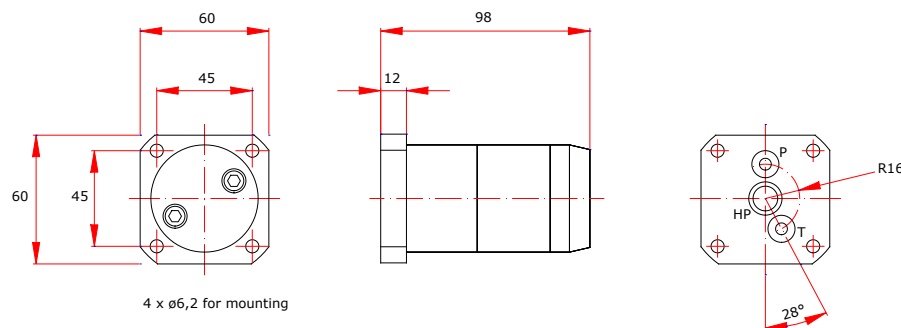
All connections: 1/2" BSP



MultiPlier Flange is a hydraulic pressure intensifier for flange-on mounting.

Features:

- Flange-on pressure intensifier
- End pressure range: 20 - 700 bar / 290 - 10,150 psi
- Multiple intensification ratios available
- Reciprocating - continuously delivers flow during pressure build-up
- All high-pressure valves are integrated – including a P.O. check Valve POV



Technical Specifications

Ratio	Max. Inlet flow	Max. Supply Pressure	Max. Output Pressure
(i)	(LPM / GPM)	(bar / psi)	(bar / psi)
1.5	15.0 / 4.0	200 / 2,900	300 / 4,350
2.0	15.0 / 4.0	200 / 2,900	400 / 5,800
2.8	8.0 / 2.1	200 / 2,900	560 / 8,120
3.4	15.0 / 4.0	200 / 2,900	680 / 9,860
4.0	14.0 / 3.7	175 / 2,538	700 / 10,150
5.0	14.0 / 3.7	140 / 2,030	700 / 10,150
7.0	13.0 / 3.4	100 / 1,450	700 / 10,150
9.0	13.0 / 3.4	78 / 1,128	700 / 10,150

MP-C | LOW/MEDIUM PRESSURE

MultiPlier Cetop/NG6 is a hydraulic pressure intensifier for Cetop/NG6 mounting.

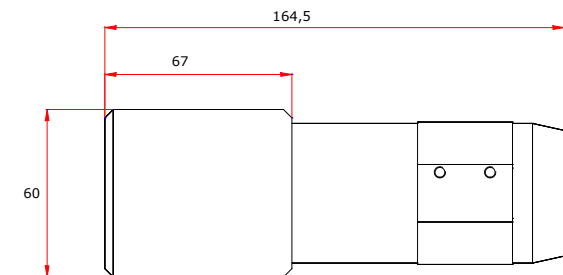
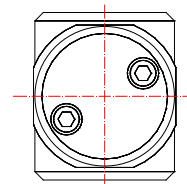
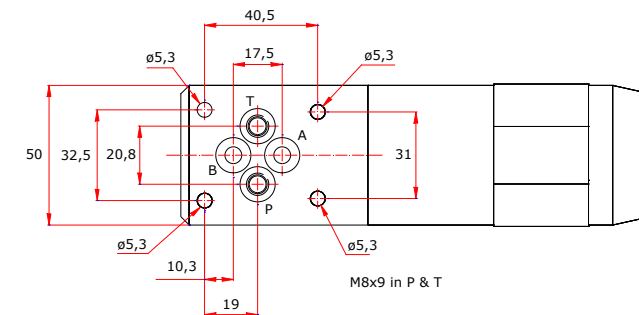
Features:

- Cetop DO3 / NG6 pressure intensifier
- End pressure range: 20 - 500 bar / 290 - 7,250 psi
- Multiple intensification ratios available
- Reciprocating - continuously delivers flow during pressure build-up
- All high-pressure valves are integrated – including a P.O. check Valve POV



Technical Specifications

Ratio	Max. Inlet flow	Max. Supply Pressure	Max. Output Pressure
(i)	(LPM / GPM)	(bar / psi)	(bar / psi)
1.5	15.0 / 4.0	200 / 2,900	300 / 4,350
2.0	15.0 / 4.0	200 / 2,900	400 / 5,800
2.8	8.0 / 2.1	178 / 2,589	500 / 7,250
3.4	15.0 / 4.0	147 / 2,132	500 / 7,250
4.0	14.0 / 3.7	125 / 1,812	500 / 7,250
5.0	14.0 / 3.7	100 / 1,450	500 / 7,250
7.0	13.0 / 3.4	71 / 1,036	500 / 7,250
9.0	13.0 / 3.4	56 / 806	500 / 7,250





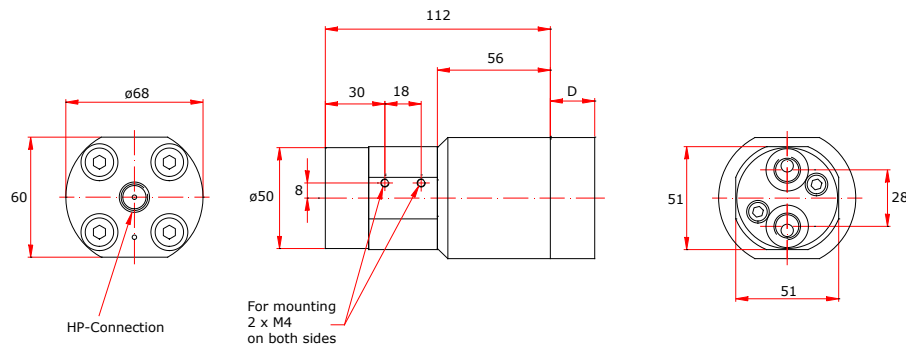
MultiPlier 2000 is a hydraulic pressure intensifier for high-pressure power packs up to 3,000 bar / 43,500 psi.

Features:

- In-line pressure intensifier
- End pressure range: 800 - 3,000 bar / 11,600 - 43,500 psi
- Multiple intensification ratios available
- Reciprocating - continuously delivers flow during pressure build-up
- All high-pressure valves are integrated
- Selection of top plates for high pressure connection available

Technical Specifications

Ratio	Max. Inlet flow	Max. Supply Pressure	Max. Output Pressure
(i)	(LPM / GPM)	(bar / psi)	(bar / psi)
7.0	13.0 / 3.4	200 / 2,900	1,400 / 20,300
10.0	12.0 / 3.2	200 / 2,900	2,000 / 29,000
13.0	10.0 / 2.6	200 / 2,900	2,600 / 37,700
16.0	10.0 / 2.6	188 / 2,711	3,000 / 43,500



The HP-Connection and D depend on the top Plate chosen

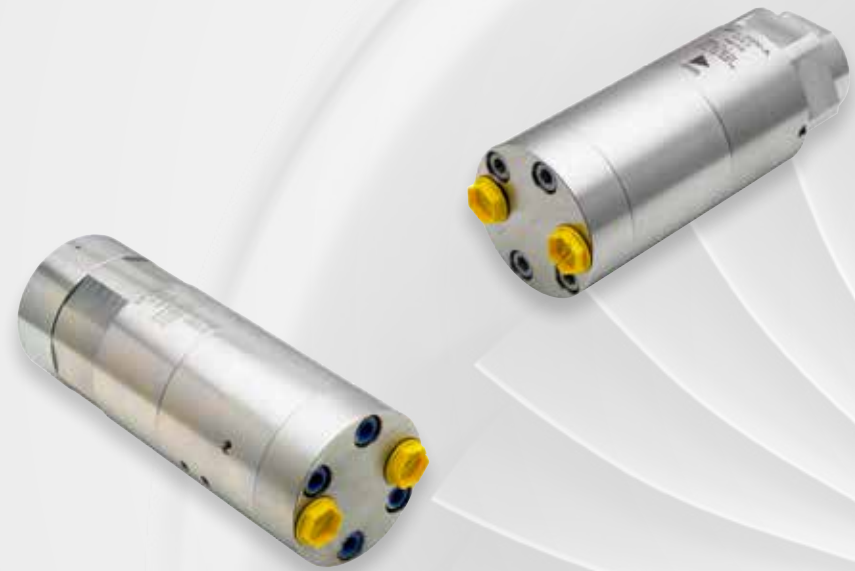
P & T Connections: 1/4" BSP or 7/16-20 unf

MPL-1400/2000/4000 | HIGH PRESSURE

The MultiPlier 1400/2000/4000 models are hydraulic pressure intensifiers for high flow and high pressure.

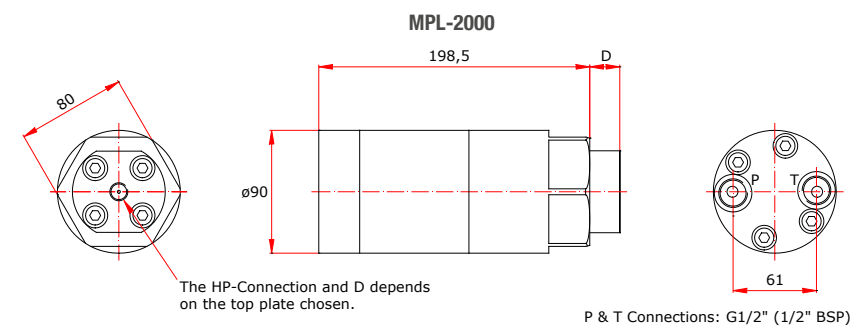
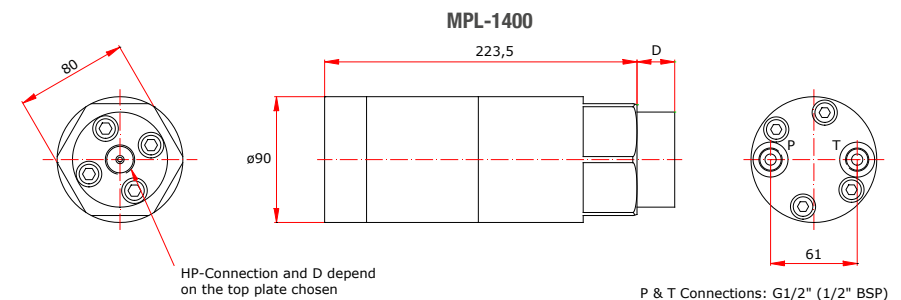
Features:

- In-line pressure intensifiers
- End pressure range: 800 - 4,000 bar / 11,600 - 58,000 psi
- Reciprocating - continuously delivers flow during pressure build-up
- Multiple intensification ratios available
- All high-pressure valves are integrated
- Selection of top plates for high pressure connection available



Technical Specifications

MPL	Ratio	Max. Inlet flow	Max. Supply Pressure	Max. Output Pressure
	(i)	(LPM / GPM)	(bar / psi)	(bar / psi)
1400	7.0	60.0 / 15.8	200 / 2,900	1,400 / 20,300
2000	10.0	50.0 / 13.2	200 / 2,900	2,000 / 29,000
2000	14.0	50.0 / 13.2	200 / 2,900	2,800 / 40,600
4000	20.0	30.0 / 7.9	200 / 2,900	4,000 / 58,000



MP-CT

MultiPlier CT is a hydraulic pressure intensifier for Cetop/NG6 mountings with separate high-pressure ports. A hydraulic mini power pack can also be added when a higher end pressure is required.

Features:

- Cetop DO3 / NG6 pressure intensifier
- End pressure range: 20 - 800 bar / 290 - 11,600 psi
- Multiple intensification ratios available
- Reciprocating - continuously delivers flow during pressure build-up
- All high-pressure valves are integrated – including a P.O. check Valve POV
- No change of pressure in A & B ports, separate port for high pressure



SIS-SERIES

The ScanWill Intensifier Solution is for use in hydraulic systems where higher pressure is needed, locally. The SIS-series is design protected.

Features:

- Compact solution - Fast to connect
- Strainer filters included
- Pressure gauge included
- Pressure setting valve included
- For single and double acting cylinders
- Multiple intensification ratios available
- Available in stainless steel



MP-T-P-7.0-R

The MP-T-P-7.0-R is a custom made pressure intensifier built for mounting on a rotating unit.

The pressure intensifier rotates at 1,500 rpm while intensifying a supplied pressure of 30 bar / 435 psi to 210 bar / 3,045 psi.

Features:

- In-line rotating pressure intensifier
- Reciprocating - continuously delivers flow during pressure build-up
- All high-pressure valves are integrated



MP-I

MultiPlier MP-I is a hydraulic pressure intensifier designed as a screw-in component for hydraulic manifolds.

Features:

- No tubing required
- Generates higher pressure only in defined areas of the manifold
- Other manifold components do not need to be pressure rated above pump pressure
- Multiple intensifications ratios available
- All high pressure valves are integrated

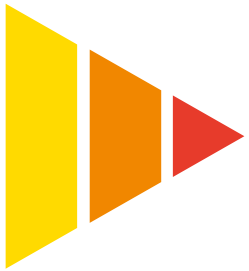




ScanWill has more than 25 years of production knowledge and application experience.

ScanWill has a network of more than 40 Sales Partners around the world providing technical assistance and swift customer service.

ScanWill's entire product range is always in stock for day-to-day shipment from the facilities in Smørum, Denmark.



ScanWill[®]
More Pressure. More Power

Check out our website:
www.scanwill.com

Contact us:
ScanWill Fluid Power ApS
Hassellunden 14
Smørum
DK-2765 Denmark
Telephone: +45 74 42 34 50
Email: info@scanwill.com