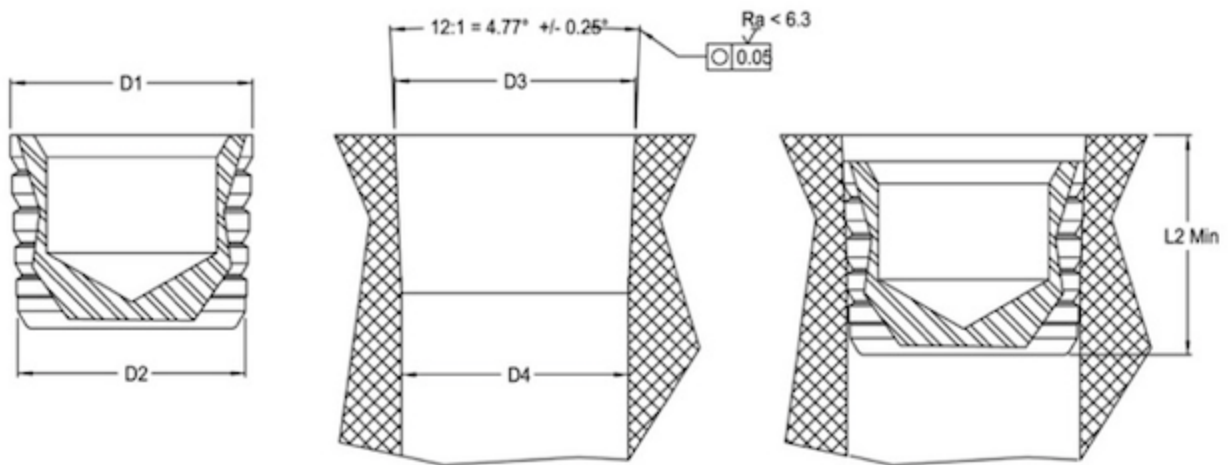




## LB Series Tapered Sealing Plugs

Material: 416 Stainless Steel



Size	D1	D2	D3 Min	D4 +0,1/-0,3	L1	L2 Min REF
4	4,40	3,7	4,55	4,0	5,0	6,0
5	5,40	4,7	5,55	5,0	6,0	7,0
6	6,40	5,7	6,55	6,0	6,0	7,0
7	7,40	6,7	7,55	7,0	6,0	7,0
8	8,40	7,7	8,60	8,0	7,0	8,0
9	9,60	9,0	9,70	9,0	7,5	8,5
10	10,65	10,0	10,80	10,0	8,5	9,5
12	12,75	12,0	12,90	12,0	9,5	10,5

*Dimensions in mm*