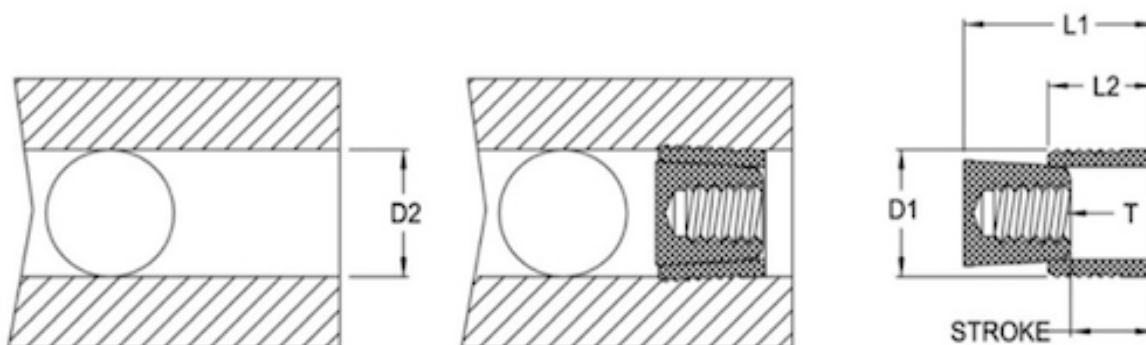




LRST Series PullPlugs

Plug material: Case Hardening Steel, Black Oxide Finish

Pin material: 416 Stainless Steel



D1	L1	D2 +0.1/-0.0	L2 REF	STROKE	T
5,0	7,5	5,0	4,5	3,0 +0.00/ -1.0	4-40UNC
6,0	8,5	6,0	5,0	3,5 +0.00/ -1.0	3.0 X 0.5
7,0	9,5	7,0	5,5	4,0 +0.00/ -1.0	6-32UNC
8,0	11,5	8,0	6,5	5,0 +0.00/ -1.0	4.0 X 0.7
9,0	11,5	9,0	6,5	5,0 +0.00/ -2.0	4.0 X 0.7
10,0	11,5	10,0	6,5	5,0 +0.00/ -2.0	5.0 X 0.8
12,0	13,2	12,0	7,5	5,7 +0.00/ -2.0	5.0 X 0.8
14,0	13,9	14,0	8,0	5,9 +0.00/ -2.0	6.0 X 1.0
16,0	18,2	16,0	10,5	7,7 +0.00/ -2.5	8.0 X 1.25
18,0	20,2	18,0	12,0	8,2 +0.00/ -2.5	8.0 X 1.25
20,0	21,2	20,0	12,5	8,7 +0.00/ -2.5	10.0 X 1.5
22,0	22,2	22,0	13,0	9,2 +0.00/ -2.5	10.0 X 1.5

Dimensions in mm