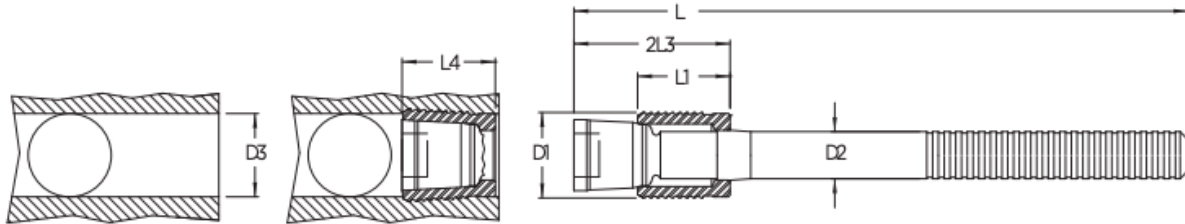




RS Series Sealing Plugs

Sleeve material: Case Hardening Steel, Black Oxide Finish

Mandrel material: Heat Treatable Steel, Black Oxide Finish



D1	L1	D2	L2 REF	L3 max.	L4 max.	D3 +0,12 -0.0
4.0	4.5	2.50	39	9.0	6.5	4.0
5.0	5.5	3.00	41	10.0	7.5	5.0
6.0	6.5	3.40	43	12.0	8.0	6.0
7.0	7.5	4.10	38	14.0	9.0	7.0
8.0	8.5	4.20	40	15.0	10.5	8.0
9.0	9.5	4.50	43	17.0	11.0	9.0
10.0	10.5	4.75	45	19.0	12.5	10.0

Dimensions in mm