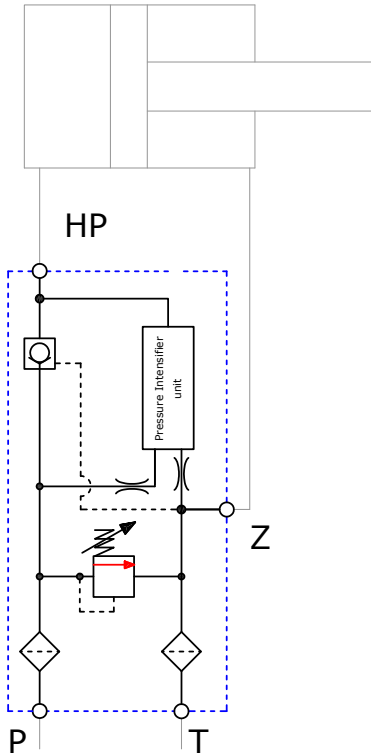




Scanwill Intensifier Solution Series SIS-22

Technical Data:

| | |
|-------------------------|---|
| Inlet flow: | Min. 2 LPM to max. 20 LPM |
| Inlet pressure: | Min. 10 bar to max. 200 bar* * depending on the chosen ratio |
| Outlet Pressure: | Variable 50 to 800 bar** **depending on the chosen ratio and setting of the inlet pressure |
| Connections: | G1/4" all ports |
| Materials: | Cast iron & steel |
| Filtration requirement: | Min. 10 micron nominal 200 micron strainers integrated |



Connecting the SIS-22

Before installing make sure the surroundings and connecting parts are clean.

- P: To be connected to pump supply
- T: To be connected to the tank line
- Z: To be connected to the low pressure side of the cylinder
- HP: To be connected to the high pressure side of the cylinder

The SIS-22 Range:

| Product code | Ratio | Max. inlet pressure (bar) | Max. outlet pressure (bar) |
|--------------|-------|---------------------------|----------------------------|
| SIS-22-2.0 | 2.0:1 | 200 | 400 |
| SIS-22-3.4 | 3.4:1 | 200 | 680 |
| SIS-22-4.0 | 4.0:1 | 200 | 800 |
| SIS-22-5.0 | 5.0:1 | 160 | 800 |
| SIS-22-7.0 | 7.0:1 | 114 | 800 |

