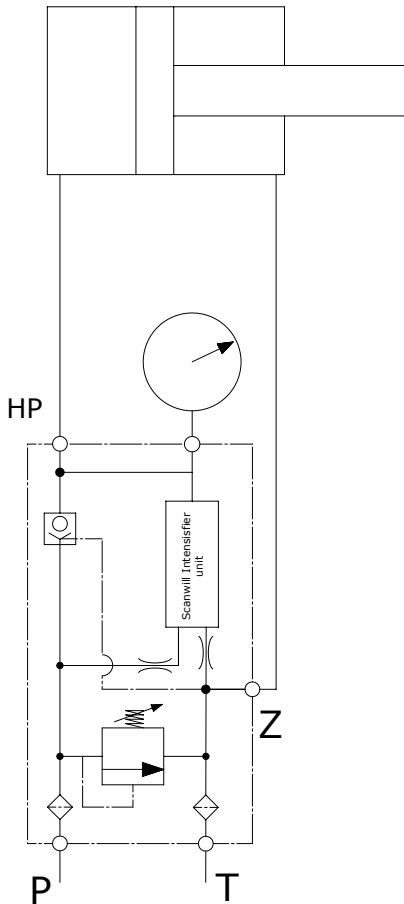


Scanwill Intensifier Solution Series SIS-34

Technical Data:

Inlet flow:	Min. 5 LPM to max. 100 LPM
Inlet pressure:	Min. 10 bar to max. 200 bar* * Depending on the ratio
Outlet Pressure:	Variable 50 to 800 bar** **Depending on the chosen ratio and setting of the inlet pressure
Connections:	G3/8" all ports
Materials:	Cast iron & steel
Filtration requirement:	Min. 10 micron nominal 200 micron strainers integrated



Connecting the SIS-34

Before installing make sure the surroundings and connecting parts are clean.

- P: To be connected to pump supply
- T: To be connected to tank line
- Z: To be connected to the low pressure side of the cylinder
- HP: To be connected to the high pressure side of the cylinder

The SIS-34 Range:

Ratio	Max. inlet pressure (bar)	Max. outlet pressure (bar)	Product code
1,8:1	200	360	SIS-34-1.8
2.1:1	200	420	SIS-34-2.1
2.6:1	200	520	SIS-34-2.6
3.4:1	200	680	SIS-34-3.4
4.0:1	200	800	SIS-34-4.0
5.0:1	160	800	SIS-34-5.0
7.0:1	114	800	SIS-34-7.0

