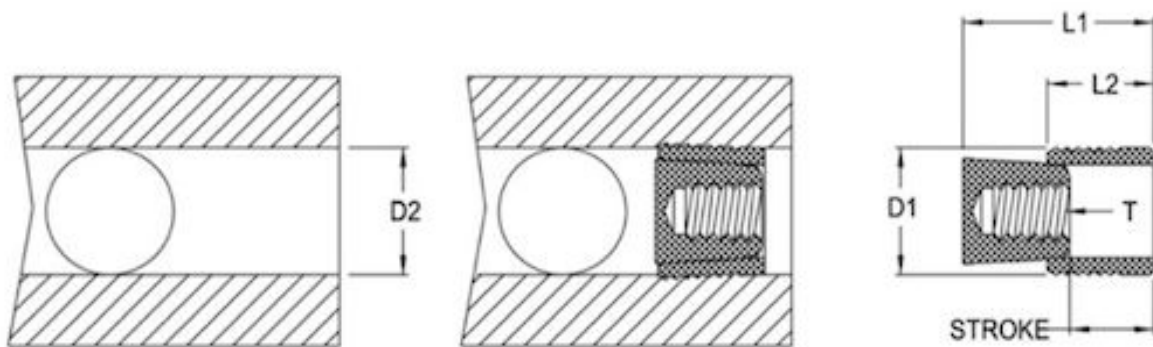




LRST Series PullPlugs

Plug material: Case Hardening Steel, Black Oxide Finish

Pin material: 416 Stainless Steel



D1	L1	D2	L2 REF	STROKE	T	Order Code	Multiplies of
5,0	7,5	5,0	4,5	3,0+0.00/-1.0	4-40UNC	LRST-050	500pcs.
6,0	8,5	6,0	5,0	3,5+0.00/-1.0	3.0 X 0.5	LRST-060	300pcs
7,0	9,5	7,0	5,5	4,0+0.00/-1.0	6-32UNC	LRST-070	300pcs
8,0	11,5	8,0	6,5	5,0+0.00/-1.0	4.0 X 0.7	LRST-080	300pcs
9,0	11,5	9,0	6,5	5,0+0.00/-2.0	4.0 X 0.7	LRST-090	300pcs
10,0	11,5	10,0	6,5	5,0+0.00/-2.0	5.0 X 0.8	LRST-100	100pcs.
12,0	13,2	12,0	7,5	5,7+0.00/-2.0	5.0 X 0.8	LRST-120	100pcs.
14,0	13,9	14,0	8,0	5,9+0.00/-2.0	6.0 X 1.0	LRST-140	100pcs.
16,0	18,2	16,0	10,5	7,7+0.00/-2.5	8.0 X 1.25	LRST-160	50pcs.
18,0	20,2	18,0	12,0	8,2+0.00/-2.5	8.0 X 1.25	LRST-180	50pcs.
20,0	21,2	20,0	12,5	8,7+0.00/-2.5	10.0 X 1.5	LRST-200	25pcs.
22,0	22,2	22,0	13,0	9,2+0.00/-2.5	10.0 X 1.5	LRST-220	25pcs.

Dimensions in mm