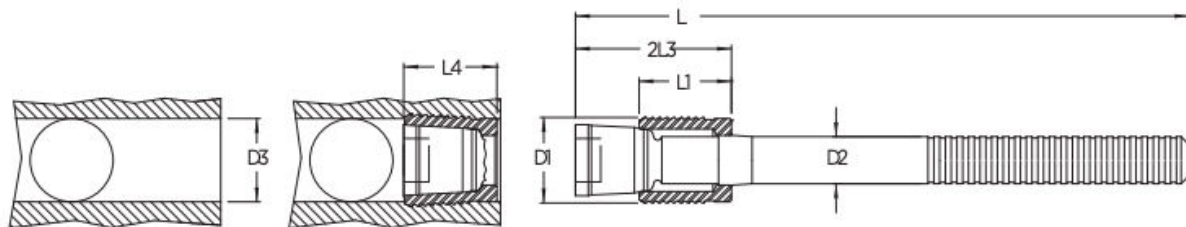




RS Series Sealing Plugs

Sleeve material: Case Hardening Steel, Black Oxide Finish

Mandrel material: Heat Treatable Steel, Black Oxide Finish



D1	L1	D2	L2 REF	L3 Max.	L4 Max.	D3 + 0.12-0.0	Order Code	Multiples of
4.0	4.5	2.50	39	9.0	6.5	4.0	RS-040	1000pcs.
5.0	5.5	3.00	51	10.0	7.5	5.0	RS-050	1000pcs.
6.0	6.5	3.40	43	12.0	8.0	6.0	RS-060	1000pcs.
7.0	7.5	4.10	38	14.0	9.0	7.0	RS-070	1000pcs.
8.0	8.5	4.20	40	15.0	10.5	8.0	RS-080	1000pcs.
9.0	9.5	4.50	43	17.0	11.0	9.0	RS-090	1000pcs.
10.0	10.5	4.75	45	19.0	12.5	10.0	RS-100	1000pcs.

Dimensions in mm